

POSH DAUNTLESS



7,000 BHP / 90 TBP / DP2 / AHTS

Call Sign: T2HH5

Class Notation ABS +A1, Towing Vessel, Fire Fighting Vessel Class 2, Offshore Support Vessel AH, Oil Recovery Capability Class 2, (E), +AMS, +DPS-2

Principal Particulars	
Flag	Tuvalu
Year Built	2013
Place Built	PRM Offshore Heavy Industries Pte Ltd
Design Draft	6.25 m
Max Summer Draft	6.25 m
Gross Tonnage	3,208.0 T
Net Tonnage	962.0 T
Deadweight (Max Draft)	3,100 T @ 6.25 m
Displacement	5,914 T
IMO No.	9503079
Design	81m Anchor Handling / Supply Vessel

Dimensions	
Length Overall	81.00 m
Beam Overall	16.80 m
Depth Moulded	7.50 m

Performance	
Max Speed	12.00 kts
Economical Speed	10.00 kts

* Subject to actual weather and operating conditions

Cargo Deck	
Deck Cargo Area	650 m ²
Deck Cargo Dimension	45.0 m x 14.0 m
Deck Cargo Capacity	1,200 T
Deck Strength	5.0 T/m ²
Reefer Point	6 x 440V

Capacities	
Fuel Tank	590.0 m ³
Cargo Fuel Oil Tank*	830.0 m ³ (shared with base oil)
Fresh Water	370.0 m ³
Drill Water *	1,015 m ³ (shared with oil recovery)
Base Oil*	376.0 m ³ (shared with cargo fuel oil)
Mud Tank*	605.0 m ³ (shared with brine)
Brine Tank*	605.0 m ³ (shared with mud)
Dry Bulk Tank	339.6 m ³ (in 6 tanks)
Oil Recovery*	1,515 m ³ (shared with drill water)

* Indicates tanks with shared capacity

Discharging Rates	
Drill Water/Pump	2 x 150 m ³ /hr @ 80 m head
Fresh Water/Pump	2 x 100 m ³ /hr @ 80 m head
Fuel/Pump	2 x 150 m ³ /hr @ 80 m head
Brine/Pump	2 x 150 m ³ /hr @ 80 m head
Liquid Mud/Pump	2 x 100 m ³ /hr @ 80 m head

Accommodation	
1 – Berth Cabins	2
2 – Berth Cabins	4
4 – Berth Cabins	14
Total (POB)	66

Main Engines & Generators	
Main Engine	Yanmar 8EY26, 2 x 2,560 kW each
Generator	Caterpillar 3412, 6 x 590kW each + Caterpillar C4.4, 1 x 92kW

Thrusters & Propulsion	
Bow Thruster	Kawasaki KT-88B3, 2 x 550 kW (2 x 9.0T)
Propeller	Kawasaki KST-220 ZC/B Rexpeller Azimuth Thruster in kort nozzle

Deck Crane	
Fixed Crane	SWL 5.0T @ 8 m

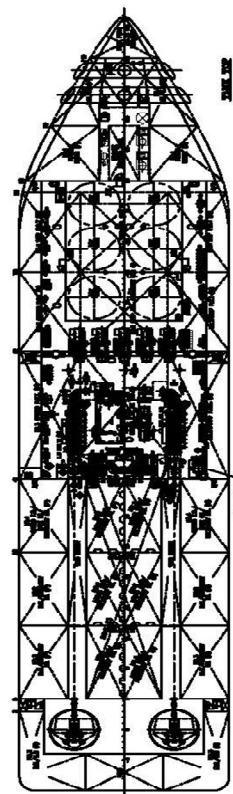
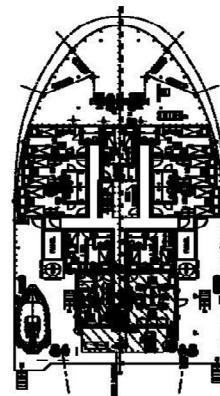
Anchor Handling/Tow Equipment	
Tow/Anchor Handling Winch	Rolls Royce Brattvaag SL150W-2T double drum waterfall type
Stall Pull Capacity	160.0 T
Brake Holding Capacity	225.0 T
Tow Drum Capacity	1,200.0 m x 52.0 mm dia wire
Anchor Handling Capacity	1,200.0 m x 52.0 mm dia wire
Storage Reel Capacity	3 x 1,800.0 m x 52.0 mm dia wire
Tugger Winch	2 x 10.0 T each
Capstan	2 x 5.0 T each
Shark Jaws	1 x Triplex H-200, SWL 200.0 T
Tow Pins	1 x Triplex S-200, SWL 200.0 T
Stern Roller	5.0 m x 2.5 m dia, SWL 300.0 T

Tow/Anchor Handling Wires	
Main Tow Wire	1,000.0 m x 52.0 mm dia wire
Spare Tow Wire	1,000.0 m x 52.0 mm dia wire
Anchor Handling Wire	1,000.0 m x 52.0 mm dia wire

Mooring Equipment	
Anchor	2 x 2,500 kg HHP Anchor
Anchor Chain	2 x 17 shackles x 42.0 mm dia
Anchor Windlass	13.0 T @ 0-12 m/min

Dynamic Positioning System	
DP Class	DP 2 L3 NMS6000
References	2 x DGPS + 1 x Cyscan
VRU	2

Fire Fighting and Rescue	
Firefighting System	FiFi 2
FiFi Pump	2 x 1,800 m ³ /hr + 1 x 3,600 m ³ /hr
FiFi Monitor	4 x 1,800 m ³ /hr
Spray Boom	2 x 6.0 m
Dispersant Capacity	29.0 m ³
Foam Capacity	29.0 m ³
Rescue Boat	1 x 10-man rigid hull waterjet FRC, 218 hp, 20 kts
Life Raft	8 x 25-man
Life Buoy	12
Life Jacket	90
Fixed H2S Detection System	Yes




PRINCIPAL PARTICULARS

LENGTH O.A. _____ 81.00m
LENGTH W.L. _____ 76.50m
BEAM MLD. _____ 16.80m
DEPTH MLD. _____ 7.50m
DRAFT DESIGNED _____ 5.50m
DRAFT MAX. _____ 6.25m
COMPLEMENT _____ 68 MEN
CREW: 54 MEN, PASSENGER: 12 MEN)

TANK CAPACITIES

SHIP'S F.O.	595m3
CARGO F.O.	813m3
POTABLE WATER	364m3
DRY BULK	339m3
LIQUID I/O	583m3
DRILL WATER	988m3
RECOVERY OIL (CLASS 2)	1480m3
FOAM	30m3
DISPERSANT	30m3

GENERAL AGREEMENT									
5th ANCHOR HANDLING/SUPPLY VESSEL									
THIS									
 VICTORIA									
DATE	NAME	ADDRESS	TELEPHONE	TELEX	MAILING ADDRESS	TELETYPE	TELEX	MAILING ADDRESS	TELETYPE
1-1-64	ANCHOR HANDLING	1000 N. 10th St.	2-1-64						
2-1-64	ANCHOR HANDLING	1000 N. 10th St.	2-1-64						
3-1-64	ANCHOR HANDLING	1000 N. 10th St.	2-1-64						
4-1-64	ANCHOR HANDLING	1000 N. 10th St.	2-1-64						
5-1-64	ANCHOR HANDLING	1000 N. 10th St.	2-1-64						
6-1-64	ANCHOR HANDLING	1000 N. 10th St.	2-1-64						
7-1-64	ANCHOR HANDLING	1000 N. 10th St.	2-1-64						
8-1-64	ANCHOR HANDLING	1000 N. 10th St.	2-1-64						
9-1-64	ANCHOR HANDLING	1000 N. 10th St.	2-1-64						
10-1-64	ANCHOR HANDLING	1000 N. 10th St.	2-1-64						
11-1-64	ANCHOR HANDLING	1000 N. 10th St.	2-1-64						
12-1-64	ANCHOR HANDLING	1000 N. 10th St.	2-1-64						
1-1-65	ANCHOR HANDLING	1000 N. 10th St.	2-1-65						
2-1-65	ANCHOR HANDLING	1000 N. 10th St.	2-1-65						
3-1-65	ANCHOR HANDLING	1000 N. 10th St.	2-1-65						
4-1-65	ANCHOR HANDLING	1000 N. 10th St.	2-1-65						
5-1-65	ANCHOR HANDLING	1000 N. 10th St.	2-1-65						
6-1-65	ANCHOR HANDLING	1000 N. 10th St.	2-1-65						
7-1-65	ANCHOR HANDLING	1000 N. 10th St.	2-1-65						
8-1-65	ANCHOR HANDLING	1000 N. 10th St.	2-1-65						
9-1-65	ANCHOR HANDLING	1000 N. 10th St.	2-1-65						
10-1-65	ANCHOR HANDLING	1000 N. 10th St.	2-1-65						
11-1-65	ANCHOR HANDLING	1000 N. 10th St.	2-1-65						
12-1-65	ANCHOR HANDLING	1000 N. 10th St.	2-1-65						
1-1-66	ANCHOR HANDLING	1000 N. 10th St.	2-1-66						
2-1-66	ANCHOR HANDLING	1000 N. 10th St.	2-1-66						
3-1-66	ANCHOR HANDLING	1000 N. 10th St.	2-1-66						
4-1-66	ANCHOR HANDLING	1000 N. 10th St.	2-1-66						
5-1-66	ANCHOR HANDLING	1000 N. 10th St.	2-1-66						
6-1-66	ANCHOR HANDLING	1000 N. 10th St.	2-1-66						
7-1-66	ANCHOR HANDLING	1000 N. 10th St.	2-1-66						
8-1-66	ANCHOR HANDLING	1000 N. 10th St.	2-1-66						
9-1-66	ANCHOR HANDLING	1000 N. 10th St.	2-1-66						
10-1-66	ANCHOR HANDLING	1000 N. 10th St.	2-1-66						
11-1-66	ANCHOR HANDLING	1000 N. 10th St.	2-1-66						
12-1-66	ANCHOR HANDLING	1000 N. 10th St.	2-1-66						
1-1-67	ANCHOR HANDLING	1000 N. 10th St.	2-1-67						
2-1-67	ANCHOR HANDLING	1000 N. 10th St.	2-1-67						
3-1-67	ANCHOR HANDLING	1000 N. 10th St.	2-1-67						
4-1-67	ANCHOR HANDLING	1000 N. 10th St.	2-1-67						
5-1-67	ANCHOR HANDLING	1000 N. 10th St.	2-1-						

1. NAME

VESSEL NAME: PACIFIC 33
VESSEL NAME: PACIFIC 333